



blacklinesafety

G7 EXO

Changing the game. **Again.**

G7 EXO: Area monitoring and gas detection that seamlessly connects your site and teams.

When it comes to the world of connected gas detection and safety wearables, we've already raised the bar. Now we've set our sights on disrupting another market — area gas monitoring.

The world's first direct-to-cloud area monitor that delivers ultimate visibility into your entire facility and workforce. With integrated 4G and optional satellite connectivity, G7 EXO automatically links to the Blackline Safety Cloud where it can integrate and work alongside employee-worn G7 devices. Streaming critical insights that create a more engaged, safer workplace across all levels and locations of your business, G7 EXO is intelligence and versatility wrapped into one game-changing solution.

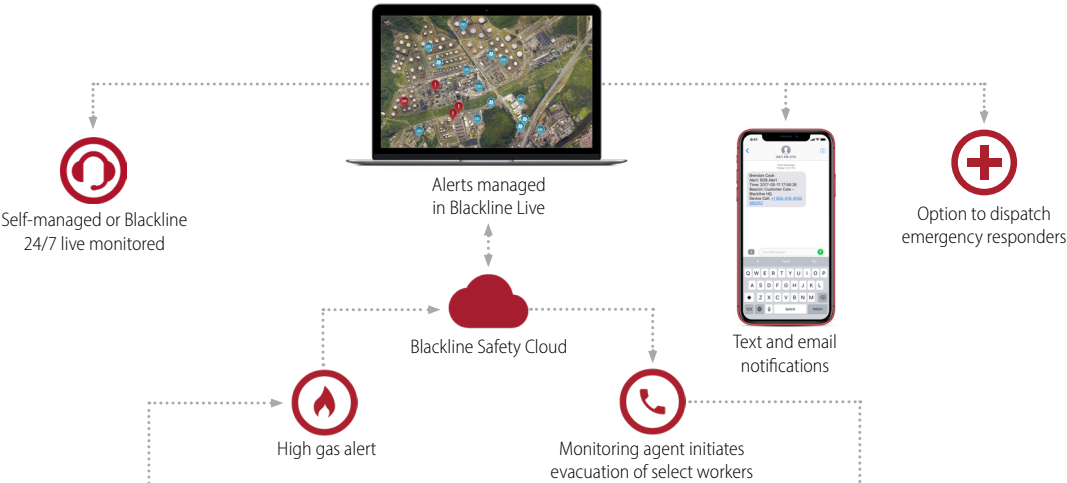
blacklinesafety



Next-gen area monitoring and peace of mind.

Gone are the days of area monitoring systems that fail to connect to each other and the rest of your safety system in a reliable and robust fashion. Leveraging integrated connectivity, all you have to do is turn G7 EXO on and it goes to work for you streaming environmental data to the Blackline Safety Cloud. EXO delivers comprehensive, robust area monitoring as part of a larger connected ecosystem in a single, easy-to-use platform.

No more troubleshooting mesh or Wi-Fi networks that try to connect personnel to area monitors. No range or device limitations between area monitors and person-worn units.



In-the-know with cloud-connected insights.

Powering automated data collection and two-way communication, with G7 EXO, you have the full picture of where your area monitors are deployed, their real-time status and which team members are working in the area. Advanced analytics capabilities summarize your data so you can address employee safety hazards or facility maintenance risks before they become a problem.

Area monitoring has never been more straightforward or considerate of your needs.



All brains. All brawn.

Until now, conventional area monitors have suffered short battery life, limited configurability and complicated or inadequate connectivity while also being challenging to configure into a seamless network. G7 EXO boasts industry-leading battery life of over 100 days while operating in standard diffusion mode with the option to run indefinitely using intrinsically safe battery accessories. Everything is supported by direct-to-cloud connectivity for simple deployment and worry-free operation.

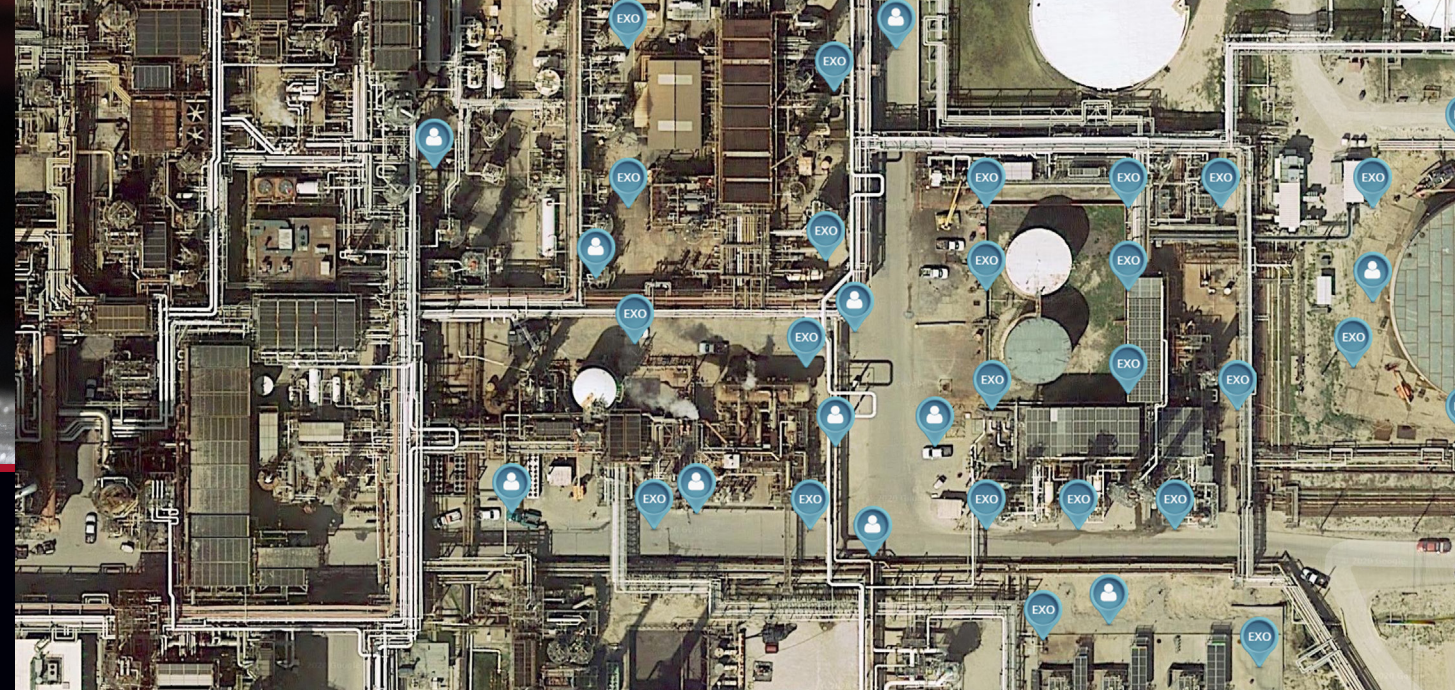
You've never experienced an area monitor this easy to use and this hard to damage. With an aluminum body and exclusive, full-color interface, G7 EXO is designed to withstand the harshest conditions while still being simple to set up, operate and maintain. A loud alarm and bright lights communicate events with nearby personnel, while simultaneously pushing the alert through the Blackline Safety Cloud to an unlimited number of Blackline devices throughout your worksite.

We're not done yet. While G7 EXO is already the world's definitive solution to area monitoring challenges, we are constantly working on expanding the EXO portfolio to address more specific needs. All add-on modules integrate seamlessly with G7 EXO for straightforward, future-proofed customization.



- Longest lasting battery life in the industry — 100+ day run time in standard operating configurations
- With 4G cellular connectivity, G7 EXO works nearly anywhere in the world
- Immediate, seamless integration with Blackline Safety Cloud and any number of G7 wearables*
- Optional push-to-talk works like a walkie-talkie with 100 channels
- Optional 24/7 live monitoring by Blackline's in-house Safety Operations Center
- Optional four-channel pump module for multi-area monitoring*
- More than 20 gas sensor options
- Optional satellite module for true global coverage**
- Simultaneous monitoring of up to five gases
- Automated configuration changes and firmware updates
- Automated usage and compliance reporting
- Rugged exterior stands up to the harshest conditions
- Integrated GPS and location beacon capability
- 360° diffusion gas detection

**Launching 2021 **Launching end 2020*



Deployment magic.

No more questions, just simple placement and hassle-free execution. On startup, G7 EXO's start-up wizard communicates the status of its network connectivity, GPS/beacon signal and placement status to the Blackline Safety Cloud.

With a large, eight-color screen, G7 EXO clearly displays all the information users need to know. If the set-up isn't quite right, it will let you know what to adjust and to simply run the start-up sequence again.

Unlike mesh or Wi-Fi networks, G7 EXO does not require any network configuration — at all. Since each G7 EXO connects directly to the Blackline Safety Cloud, there's no need for industrial-grade smartphones, Wi-Fi connections or radio links to connect personnel and site monitors to the central cloud network.



Connected. Beyond an area.

Featuring two output ports, G7 EXO can integrate with other equipment on your site into your comprehensive area and personnel monitoring system. Should gas levels reach a high threshold, it can activate vent fans, open or close gates in the event of an emergency, or sound an external siren to alert personnel within a zone.

During an emergency, G7 EXO delivers seamless communication of hazards or incidents. Simultaneously, the Blackline Live portal provides full visibility into your team members and sites, streamlining emergency response management.

G7 EXO delivers never-before-seen area monitoring control in a rugged, easy to use and deploy system. With the option to self-monitor or have Blackline's Safety Operations Center do it for you, no call for help will never go unanswered.

G7 EXO accessories



G7 EXO SATELLITE MODULE*
SKU: ACC-G7EXO-SAT



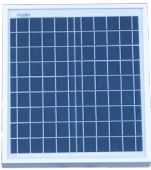
PUMP MODULE MODULE*
SKU: ACC-G7EXO-PUMP



STANDARD BATTERY PACK (144AH)
SKU: ACC-G7EXO-BAT



FAST BATTERY CHARGER
SKU: ACC-G7EXO-FAST-CHARGER-NA



SOLAR PANEL BATTERY CHARGER
SKU: ACC-G7EXO-SOLAR



SURVEY TRIPOD
SKU: ACC-G7EXO-TRIPOD



EXO BASE (STANDOFF)
SKU: ACC-G7EXO-STANDOFF



UNIVERSAL MOUNT
SKU: ACC-G7EXO-UMK

Specifications.

Gas cartridge features

High Gas Alert; Low Gas Warning
Under limit; Over limit
Time-weighted average (TWA)
Short-term exposure limit (STEL)
High gas alert; Low gas alert
Bump test and calibration notification
Bump test and calibration failure

Safety features

SOS latch: Pull latch to trigger SOS alert
Low-battery: Configurable threshold
Connection lost: Configurable threshold
Two-way voice calls: Receive voice calls from monitoring personnel
Text messages: Send and receive messages with monitoring personnel

Convenience features

Set-up Wizard
Connection lost alarm: Configurable time period
Siren volume setting: Three levels available
Text messaging: Custom messages and 10 preconfigured
Maintenance code: Configurable 4 digits
Push to Talk Communication
Tumble Alarm

User interface

Display: 4.4 inch diagonal, 480 by 640 pixel, eightcolour active matrix liquid crystal display
Menu system: driven by three-button keypad
Power button: On/off
SOS latch: Send SOS alert
Multi-language support: (EN, FR, ES, DE, IT, NL, PT)

User notification

Green connectivity light: Blinking (powered), continuous (connected)
360-degree visible yellow and red lights
Yellow light: pending and warning alarms
Red light: Red alerts
Blue LiveResponse light: Confirmation that a monitoring team has acknowledged the alert
Siren sound pressure: ~90 dB at 11.8in (30 cm), 95 dB at 6in (15 cm). Optional 110 dB siren accessory available through interface ports.

Four-channel pump module*

Optional module: Yes
Number of pump channels: 4
Sampling period per channel: Adjustable
Tubing length per channel: Up to 100 ft (30 m)

Interface ports

Intrinsically safe, configurable external signal ports designed to integrate with external alarms and electrical systems.

Power & battery

Rechargeable battery capacity: 144 Ah (LiFePO4)
Battery life in diffusion mode: 100 days at 20°C (68°F), LEL-IR, H2S, CO and O2 config.
Battery life in pump mode: 30 days at 20°C (68°F)
Charge time: 8-12 hrs
Charge temp.: 0°C to 45°C (32°F to 113°F)

IS trickle charge port

Can be used to hard-wire an IS power supply to run EXO indefinitely.

Size & weight

Size: 385 mm x 188 mm x 220 mm (15.1" x 7.4" x 8.7")
Weight: 12.25kg/27 lbs
Material: Rugged housing built from aluminum, plastic and rubberized bumpers

Cellular wireless radio

Wireless coverage: 100 countries, 200 wireless carriers
North America: 3G/4G radio; 3G UMTS bands 2 and 5; 4G bands 2, 4 and 5
International: 2G/4G radio; 2G GSM bands E-GSM and PCS; 4G bands 3, 7 and 20
Asia Pacific: 3G/4G radio; 3G UMTS band 1; 4G bands 3, 8 and 28
Antenna: Internal

Satellite module

User-upgradeable add-on: User-upgradeable satellite module allows EXO to connect to the Iridium satellite network for remote areas outside of cellular connectivity.
Network: Iridium, global coverage
Radio: 1621 MHz, 2 Watts
Antenna: Internal

Wireless updates

Device configuration changes: Yes
Device firmware upgrade OTA: Yes

Location technology

Multi-constellation: GPS/QZSS, Galileo, Beidou
Receiver type: 72-channel
Assisted-GNSS: Yes
GNSS Accuracy: 5m (16feet), CEP 50%, 24 hours static

Environmental

Storage temp.: -40°C to 60°C (-40°F to 140°F)
Operating temp.: -20°C to 50°C (-4°F to 122°F)
Ingress protection: Designed to meet IP65

Approvals (targeted)

RoHS, CE, RCM
Canada & USA: Class I Division 1 Group A,B,C,D T3; Class I Zone 0 AEx ia IIC T3; Ex ia IIC T3 Ga
IECEX: Ex ia IIC T3 Ga
ATEX: Ex ia IIC T3 Ga
LEL: CSA C22.2 No.152; ISA 12.13.01
FCC ID: W77EXO IC: 8255A-EXO
Contains: FCC ID: XPY1EIQ24NN, Q639603N
IC: 8585A-1EIQ24NN, 4629A-9603N

Blackline Live web application

Cloud-hosted safety monitoring web application is highly customizable for every customer requirement. Includes live map, employee address book, user roles, alert management, device configurations, alert setups and reporting.

Accessories

IS solar panel, IS trickle charger, low tripod and tall survey tripod, universal mount, carrying case

Warranty

Three-year hardware warranty
Extended warranty available

* Launching 2021

Build your custom G7 EXO SKU at build.blacklinesafety.com.

All specifications subject to change without notice.
*Not all sensors work with the pump module.

